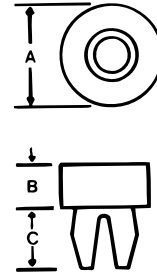
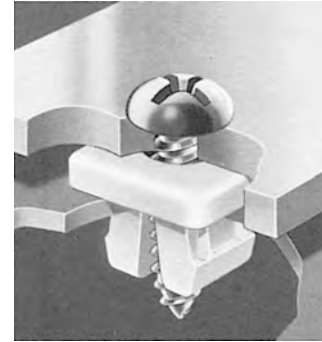


PANEL FASTENERS SCREW GROMMETS

PLASTI-GROMMETS™

NON-CORROSIVE

- Easy “snap-in” installation.
- Self-retaining in the panel.
- Works as a panel stand-off.
- Spreads load over a large area to achieve high load bearing capacity.
- Insulates at fastening point against electrolytic action.
- Non-conductive, non-corrosive.



PLASTI-GROMMETS PART NUMBER	DIMENSIONS			MOUNTING		SCREW SIZE
	HEAD SIZE "A"	HEAD HEIGHT "B"	PRONG LENGTH "C"	HOLE SIZE	PANEL THICKNESS	
SQUARE HEAD STYLE						
212-110302-00	.218" SQUARE	.050"	.228"	.175" SQUARE	.031" - .078"	4
212-160404-08	375" SQUARE	.189"	.291"	.253" SQUARE	.031" - .109"	6
212-180402-91	375" SQUARE	.305"	.296"	.273" SQUARE	.031" - .109"	6
242-160502-70	375" SQUARE	.031"	.296"	.250" SQUARE	.031" - .125"	6 or 8
242-170602-83	375" SQUARE	.035"	.335"	.275" SQUARE	.031" - .140"	6 or 8
242-170602-80	375" SQUARE	.033"	.340"	.273" SQUARE	.031" - .156"	8
242-170602-84	375" SQUARE	.035"	.340"	.283" SQUARE	.031" - .156"	8
212-180402-06	.406" SQUARE	.030"	.296"	.273" SQUARE	.031" - .109"	8 or 10
242-180602-90	.406" SQUARE	.033"	.340"	.283" SQUARE	.031" - .156"	8 or 10
242-180602-91	.406" SQUARE	.062"	.340"	.283" SQUARE	.031" - .156"	8 or 10
212-180602-10	375" SQUARE	.045"	.359"	.284" SQUARE	.031" - .156"	8 or 10
212-180402-55	.500" SQUARE	.125"	.296"	.284" SQUARE	.031" - .109"	8 or 10
212-240402-04	.625" SQUARE	.078"	.340"	.383" SQUARE	.031" - .156"	10
212-240602-04	.625" SQUARE	.078"	.359"	.375" SQUARE	.031" - .156"	1/4-20
212-240402-00	.625" SQUARE	.078"	.286"	.378" SQUARE	.031" - .109"	1/4-20
212-270402-01	.562" SQUARE	.078"	.327"	.428" SQUARE	.031" - .109"	5/16-18
CIRCULAR HEAD STYLE						
212-170602-37	.500" DIAMETER	.500"	.340"	.283" SQUARE	.031" - .156"	8
212-170402-01	.375" DIAMETER	.672"	.296"	.273" SQUARE	.031" - .109"	8 or 10
212-180402-66	.500" DIAMETER	.250"	.296"	.273" SQUARE	.031" - .109"	8 or 10
212-180402-73	.500" DIAMETER	.937"	.296"	.273" SQUARE	.031" - .109"	8 or 10
212-170602-05	.500" DIAMETER	1.375"	.296"	.273" SQUARE	.031" - .109"	8 or 10
212-180402-11	.562" DIAMETER	.562"	.296"	.273" SQUARE	.031" - .109"	8 or 10
212-180402-40	.493" DIAMETER	.375"	.296"	.283" SQUARE	.031" - .109"	8 or 10
212-180402-38	.493" DIAMETER	.500"	.296"	.283" SQUARE	.031" - .109"	8 or 10
212-180402-37	.493" DIAMETER	.625"	.296"	.283" SQUARE	.031" - .093"	8 or 10
212-180402-51	.493" DIAMETER	.687"	.296"	.283" SQUARE	.031" - .109"	8 or 10
212-180402-53	.493" DIAMETER	.750"	.296"	.283" SQUARE	.031" - .109"	8 or 10
242-180602-92	.500" DIAMETER	.098"	.340"	.283" SQUARE	.031" - .156"	8 or 10
242-180602-93	.500" DIAMETER	.130"	.340"	.283" SQUARE	.031" - .156"	8 or 10
212-180402-15	.500" DIAMETER	.250"	.296"	.283" SQUARE	.031" - .109"	8 or 10
212-180402-69	.500" DIAMETER	.312"	.296"	.283" SQUARE	.031" - .109"	8 or 10
212-180602-13	.500" DIAMETER	.375"	.340"	.283" SQUARE	.031" - .156"	8 or 10
212-180402-83	.547" DIAMETER	1.062"	.296"	.283" SQUARE	.031" - .109"	8 or 10
242-210602-10	.562" DIAMETER	.062"	.340"	.337" SQUARE	.031" - .156"	1/4-20
212-240402-07	.687" DIAMETER	.375"	.340"	.383" SQUARE	.031" - .156"	1/4-20
212-240602-00	.687" DIAMETER	.469"	.340"	.383" SQUARE	.031" - .156"	1/4-20
RECTANGULAR HEAD STYLE						
212-170602-00	.500" x .750" RECTANGLE	.040"	.340"	.273" SQUARE	.031" - .156"	8 or 10

Material: Nylon

Color: Natural - custom available.

Note: Listed dimensions are nominal.

For detailed material specifications and product strength guidelines.

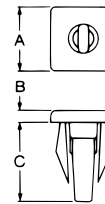
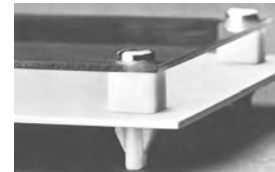
www.clancey.com

PANEL FASTENERS SCREW GROMMETS

- Easy “snap-in” installation.
- Encloz grommet captures the end of the metal screw providing electrical insulation and protecting against temperature/moisture transfer and exposed screw points.
- Acts as a panel stand-off.
- Non-conductive, non-corrosive.

ENCLOZ® SCREW GROMMETS

NON-CORROSIVE



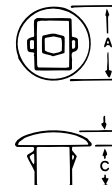
ENCLOZ SCREW GROMMETS PART NUMBER	DIMENSIONS			MOUNTING		SCREW SIZE
	HEAD SIZE "A"	HEAD HEIGHT "B"	PRONG LENGTH "C"	HOLE SIZE	PANEL THICKNESS RANGE	
217-180502-22	.380" SQUARE	.125"	.490"	.273" SQUARE	.020" - .140"	8 or 10
217-180502-24	.380" SQUARE	.250"	.480"	.273" SQUARE	.020" - .140"	8 or 10
217-180502-26	.380" SQUARE	.375"	.490"	.273" SQUARE	.020" - .140"	8 or 10
217-180502-35	.380" SQUARE	.030"	.490"	.271" SQUARE	.020" - .140"	8 or 10
217-180502-04	.380" SQUARE	.250"	.490"	.283" SQUARE	.020" - .140"	8 or 10
217-180502-05	.380" SQUARE	.312"	.490"	.283" SQUARE	.020" - .140"	8 or 10
217-180502-06	.380" SQUARE	.375"	.490"	.283" SQUARE	.020" - .140"	8 or 10
217-180502-08	.380" SQUARE	.500"	.490"	.283" SQUARE	.020" - .140"	8 or 10
217-200502-06	.380" SQUARE	.380"	.480"	.312" SQUARE	.020" - .140"	8 or 10
217-200502-08	.380" SQUARE	.500"	.480"	.312" SQUARE	.020" - .140"	8 or 10

Material: Nylon **Color:** Natural **Note:** Listed dimensions are nominal

- Ideal when components are fastened from the opposite side of the panel.
- Non-conductive, captures the screw.
- Attractive decorative head.

ENCLOZ® REVERSE SCREW GROMMETS

NON-CORROSIVE

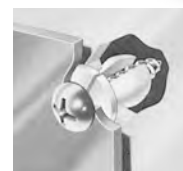
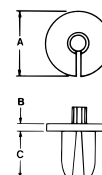


ENCLOZ REVERSE SCREW GROMMETS PART NUMBER	DIMENSIONS			MOUNTING		SCREW SIZE
	HEAD SIZE "A"	HEAD HEIGHT "B"	PRONG LENGTH "C"	HOLE SIZE	PANEL THICKNESS RANGE	
212-320602-01	.500" DIAMETER	.095"	.397"	.250" x .343"	.040" - .060"	8
212-320334-00	.500" DIAMETER	.100"	.525"	.312" x .343"	.062" - .092"	8

- Insulated screw grommet for round hole mounting.
- Special pin provides friction fit into the hole.

ROUND HOLE SCREW GROMMETS

NON-CORROSIVE



ROUND HOLE SCREW GROMMET PART NUMBER	DIMENSIONS			MOUNTING		SCREW SIZE
	HEAD SIZE "A"	HEAD HEIGHT "B"	PRONG LENGTH "C"	HOLE SIZE	PANEL THICKNESS RANGE*	
212-250301-00	.500" DIAMETER	.060"	.390"	.248" - .265" DIA.	.020" - .250"	8

Material: Nylon
Color: Natural
Note: Listed dimensions are nominal

* panel hole size will vary with panel thickness

PANEL FASTENERS, SCREW GROMMETS